



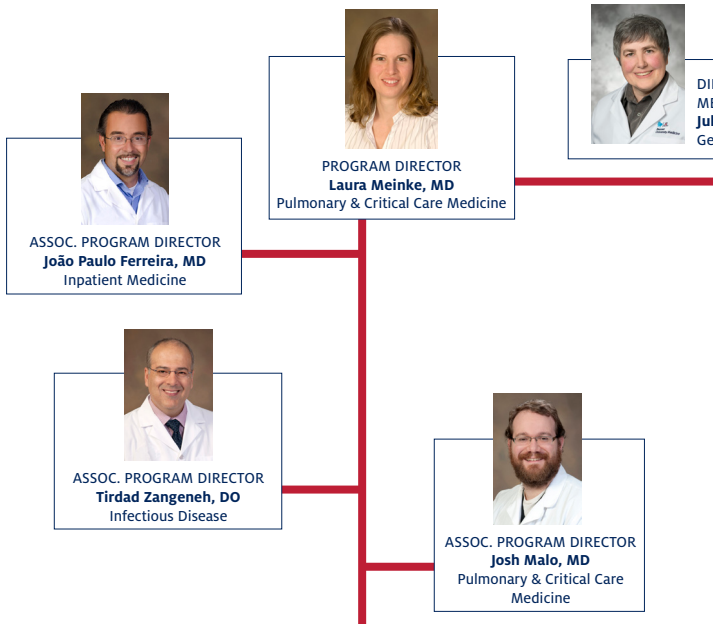
THE UNIVERSITY OF ARIZONA  
COLLEGE OF MEDICINE TUCSON

# Department of Medicine

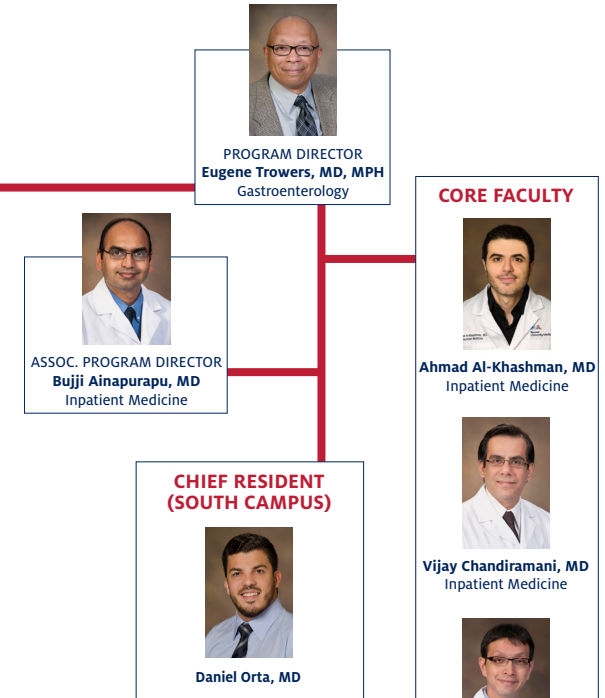
# Medicine Core and Key Clinical Faculty Guide

The Department of Medicine Education Office oversees the department's many undergraduate and graduate medical education programs. This Guide identifies our educational leaders and faculty with significant teaching responsibilities.

## INTERNAL MEDICINE RESIDENCY (TUCSON CAMPUS)



## INTERNAL MEDICINE RESIDENCY (SOUTH CAMPUS)



## CORE FACULTY

- Ahmad Al-Khashman, MD  
Inpatient Medicine
- Vijay Chandiramani, MD  
Inpatient Medicine
- Kwan Lee, MD  
Cardiology
- Anil Potharaju, MD  
Inpatient Medicine
- Monica Vandivort, MD  
Geriatric Medicine

## KEY CLINICAL FACULTY

- Janet Campion, MD, MPH  
Pulmonary & Critical Care Medicine
- Randy Horwitz, MD, PhD  
Integrative Medicine
- Elizabeth Juneman, MD  
Cardiology
- Merri Pendergrass, MD, PhD  
Endocrinology
- Aaron Scott, MD  
Hematology & Oncology
- Robert Segal, MD  
Dermatology
- Dominick Sudano, MD  
Rheumatology
- Sasha Taleban, MD  
Gastroenterology
- Bijin Thajudeen, MD  
Nephrology
- Tejo Vemulapalli, MD  
Inpatient Medicine

## CORE FACULTY

- Meenakshi Dagar, MD  
General Medicine
- Lori E. Fantry, MD, MPH  
Infectious Disease
- David Lieberman, MD  
General Medicine
- Dalia Mikhael, MD  
Inpatient Medicine  
Asst. Director, Medicine Subinternship
- Indu Partha, MD  
General Medicine
- Serena J. Scott, MD  
General Medicine  
Director, Medicine Subinternship
- Anthony Witten, DO  
Inpatient Medicine

## CHIEF RESIDENTS (TUCSON CAMPUS)

- Nathan Coffman, MD
- Joshua Cox, MD
- Jessica Vondrak, MD
- Richard Young, MD

### Medicine Education Office

The University of Arizona  
Department of Medicine  
PO Box 245040-A  
1501 N. Campbell Ave.  
Tucson, AZ 85724-5040A  
Phone: (520) 626-0773  
[deptmedicine.arizona.edu/education](http://deptmedicine.arizona.edu/education)



**Email questions to:**  
Medicine Education Office  
Susan Ellis, EdS  
Education Associate Specialist  
[sellis@deptofmed.arizona.edu](mailto:sellis@deptofmed.arizona.edu)