



THE UNIVERSITY OF ARIZONA
COLLEGE OF MEDICINE TUCSON

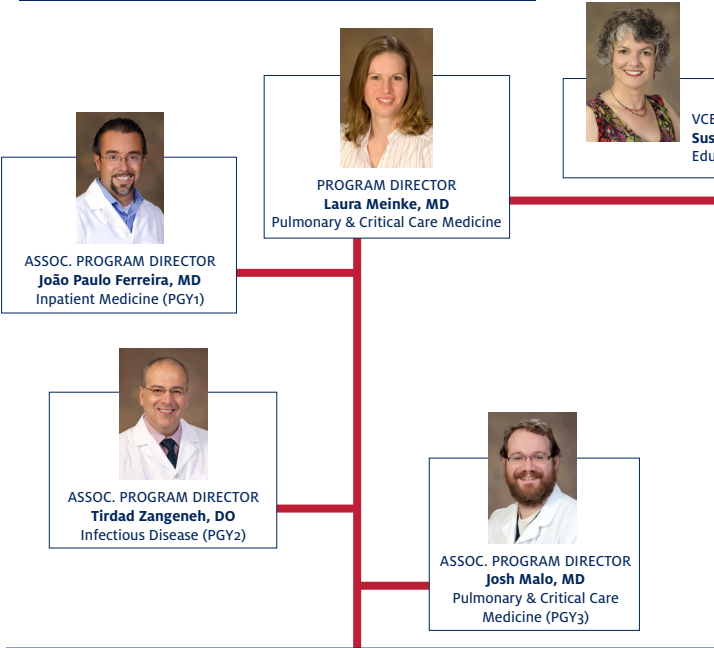
Department of Medicine

Medicine Core and Key Clinical Faculty Guide

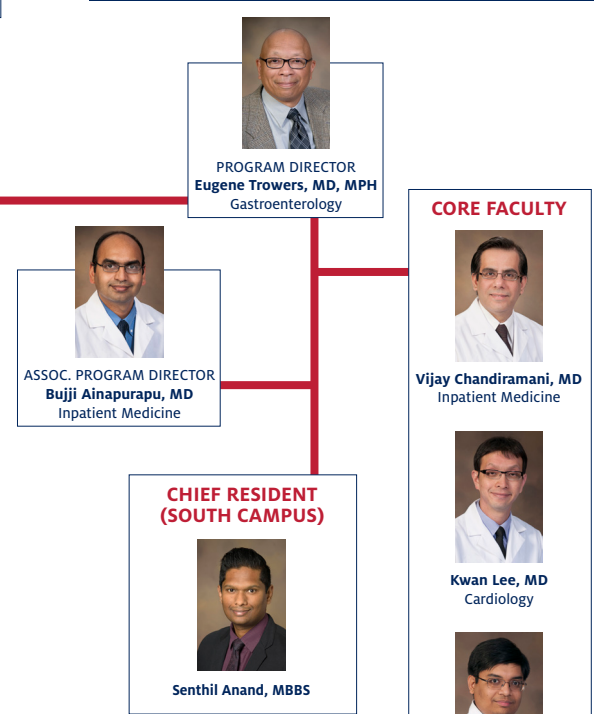
The Vice Chair for Education Office in the University of Arizona Department of Medicine oversees undergraduate and graduate medical education programs. In order to better acquaint learners and faculty with the specific education leadership with significant teaching responsibilities with learners in our GME programs, please refer to the following Medicine Core and Key Clinical Faculty Guide.

Email questions to: Office of the Vice Chair for Education
sellis@deptofmed.arizona.edu

INTERNAL MEDICINE RESIDENCY (TUCSON CAMPUS)



INTERNAL MEDICINE RESIDENCY (SOUTH CAMPUS)



KEY CLINICAL FACULTY

 Katharina Beeler, MD Inpatient Medicine	 Janet Campion, MD, MPH Pulmonary & Critical Care Medicine	 Randy Horwitz, MD, PhD Integrative Medicine
 Elizabeth Juneman, MD Cardiology	 Merri Pendergrass, MD, PhD Endocrinology	 Aaron Scott, MD Hematology & Oncology
 Anna Stepczynski, MD General Medicine	 Dominic Sudano, MD Rheumatology	 Sasha Taleban, MD Gastroenterology
 Bijin Thajudeen, MD Nephrology	 Tejo Vemulapalli, MD Inpatient Medicine	

CORE FACULTY

 Meenakshi Dagar, MD General Medicine	 Lori E. Fantry, MD, MPH Infectious Disease	 Anca Georgescu, MD Infectious Disease	 Dalia Mikhael, MD Inpatient Medicine	 Indu Partha, MD General Medicine	 Serena J. Scott, MD General Medicine
---	---	--	---	---	---

CHIEF RESIDENTS (TUCSON CAMPUS)

 Bilal Jawad, MBBS	 Kawanjit Sekhon, MD	 Aakash Shah, MD	 Yunuen Valenzuela, MD
-----------------------	-------------------------	---------------------	---------------------------

CORE FACULTY

 Vijay Chandiramani, MD Inpatient Medicine
 Kwan Lee, MD Cardiology
 Anil Potharaju, MD Inpatient Medicine
 Raed Sukerji, MD General Medicine
 Monica Vandivort, MD Geriatric Medicine

Office of the Vice Chair for Education

The University of Arizona
Department of Medicine
PO Box 245040-A
1501 N. Campbell Ave.
Tucson, AZ 85724-5040A
Phone: (520) 626-0773
Fax: (520) 626-5721
deptmedicine.arizona.edu/education

Residency Program Staff Contacts:

Keirith Lisa, Internal Medicine – Tucson Campus, keirith@deptofmed.arizona.edu
Mary Gosciminski, Internal Medicine – South Campus, marygski@email.arizona.edu
Mary Dickinson, Dermatology, mdickins@email.arizona.edu

For Fellowship Programs, visit:
deptmedicine.arizona.edu/education/fellowships