

Open House:

Sept. 9, 2016

5:00 – 5.30 pm entertainment/refreshments

5.30-7.00 pm presentations

University of Arizona Cancer Center – North

3838 N. Campbell Ave., Tucson, AZ 85719

Lymphatic cancer starts in cells that are part of the body's immune system—our disease-fighting network, according to the American Cancer Society. This includes the lymph nodes, spleen, thymus gland and bone marrow. The main types of lymphoma are Hodgkin's lymphoma and non-Hodgkin's lymphoma. Symptoms include enlarged lymph nodes, fatigue, and weight loss. Treatment may involve chemotherapy, medication, radiation therapy, and rarely stem-cell transplant.



Daniel Persky, MD, is an associate professor of medicine, associate director of Clinical Investigations and director of the Clinical Trials Office. Dr. Persky will talk about lymphoma. **Ravi**

Krishnadasan, MD, assistant professor of clinical medicine, will address the latest issues and advances involving leukemia.

Light refreshments and soft entertainment will be provided.

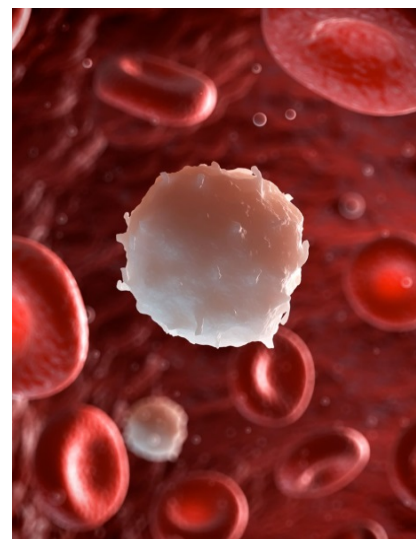


THE UNIVERSITY OF ARIZONA
Cancer Center



University of Arizona
Cancer Center

Lymphatic Lymphoma & Leukemia



Contact: Margaret Eller, RN, oncology nurse navigator, margaret.eller@bannerhealth.com or (520) 694-9060